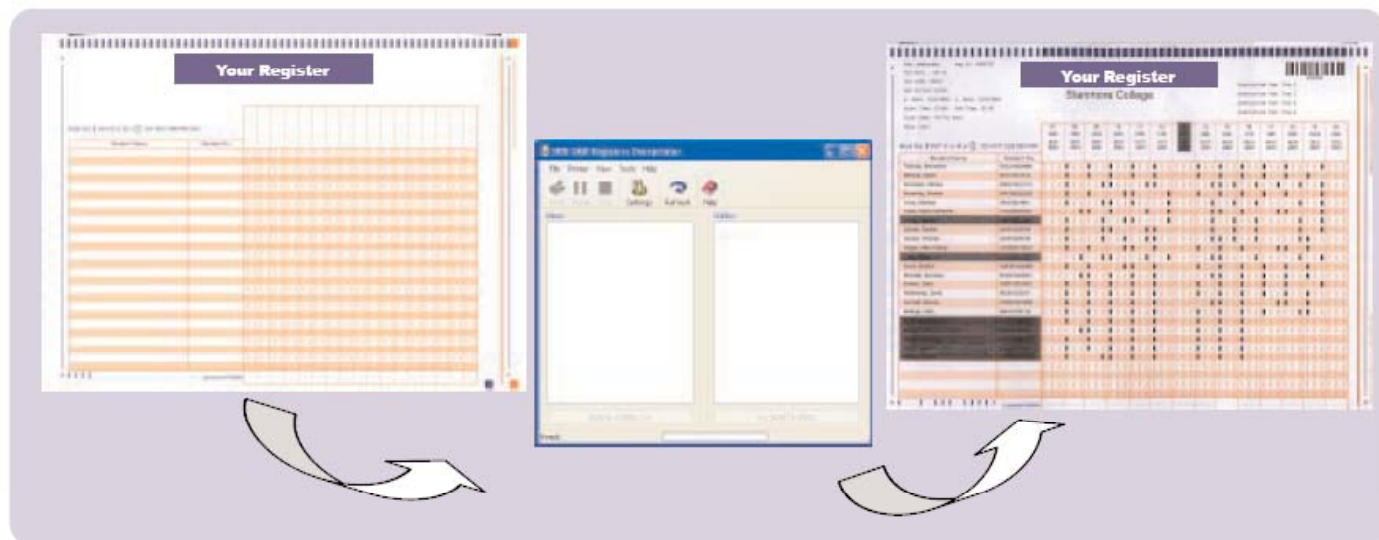


DRS OMR Registers



DRS Data Services Limited

The DRS OMR Registers is a utility for overprinting 2 or 3 column register forms with student information. You can then scan batches of completed register forms using a DRS Optical Mark Reader, and export the data directly into your MIS System.



Easily Integrated

Users are able to select the data they require to be printed from their Student Management System. The utility will work with any printer and is easily integrated into an existing MIS system.

Registers are completed each week and simply returned for scanning on the OMR. After scanning, forms can be returned to lecturers, or, if lost or damaged, new register forms showing attendance to date can be reprinted. Software for scanning the registers is included in the package.

Configure to your own requirements

The system is totally flexible and can be refined to suit your own specific requirements. You can display information fields on the form such as college name, department, class name, tutor name, room, day of the week etc.

An 'instruction' field allows you to print 4 lines of up to 45 characters each, with information unique to your college, such as form completion guidance, timing deadlines and returning information. You also have the option to highlight specific areas on the form to show holidays e.g. half term or bank holidays, as well as withdrawn, transferred or completed students.

Unlimited options

Lecturers also have the option of adding new students' attendance to the bottom of the register. This data can then be entered after scanning and new students enrolled if necessary. The system allows for the prototyping of registers e.g. it can print a blank register with no names or class details. This can be used as a temporary register.

The system uses barcodes to identify each individual register. The barcode holds both register and student information, so providing greater security and data integrity.

Complete Windows integration

Easy to use Windows techniques allow you to 'drag and drop' class group names between the Inbox and Outbox.

A fully online Help system is available at any time to allow easy access to information on using and setting the DRS OMR Registers system.

Microsoft
CERTIFIED
Partner

Automated Attendance Marking

Automated data capture

The recording and monitoring of student attendance is becoming an essential requirement for all Further and Adult Education establishments. For many, two important questions have still to be resolved:

- How are attendance marks captured?
- How are marked registers processed?

Traditionally, registers have been recorded using a paper-based system and, if processed at all, was achieved by operators entering the individual attendance marks against each student. One well proved and cost-effective solution to this task is the use of an Optical Mark Reader (OMR). This is the same method that is used on the lottery tickets and involves the automated processing of bulk data using scanning technology. DRS has joined forces with MIS suppliers to provide colleges and authorities with a solution for automated attendance marking.

Barcode Security

Each register is uniquely identified by a barcode within your MIS system and overprinted with the other register details. Barcodes provide excellent security and data integrity. Each barcode holds both register and student information, thereby ensuring that mismatches between the register profile and printed register cannot occur.

“We have successfully used an OMR register for a number of years with Distinction Student 2000 and found it to be a quick and efficient way to record and monitor student attendance throughout the year.

We now use DRS OMR Registers to export information from QLS and successfully print registers. This allows us to read, via our OMR, all the college's registers and successfully import the correct information back into QLS for reporting and analysis. In my opinion, this is a very good, quick and efficient way of producing, reading and monitoring registers. I would certainly recommend this method.”

*Sue Kelly
MIS Manager, North Area College*

“We use a combination of Distinction QLS and DRS Optical Mark Readers for all full and part-time classes. Producing registers in this way enables us to monitor student attendance and punctuality in a way that would be extremely time-consuming if carried out manually. The DRS OMR Registers software is a very simple application to use with results that keeps teaching staff and managers aware of students' attendance patterns.

We are delighted with the OMR system as it gives us instant and up-to-date MIS information. Throughout implementation DRS gave us considerable support and advice which eased the process of changing from manual registers. Thank you DRS!”

*Terry Stevens
Assistant Director of Information Services
Stanmore College of Further Education Corporation*

Many organisations have already felt the financial benefits of using the DRS OMR Registers system. Using the DRS OMR scanners greatly reduces the amount of manual keying normally required for register processing. The DRS OMR Register system has meant many Further and Adult Education establishments have made considerable savings in their administration departments.



DRS CD400 Optical Mark Reader

DRS OMR Registers work with the range of fully automatic DRS OMR and Image scanners.

DRS has over 30 years experience in providing data capture solutions to around 10,000 education establishments all over the world through its range of Optical Mark Readers and Optical & Intelligent Character Recognition technology. OMRs are used in applications such as attendance monitoring, course feedback, multiple choice assessments and survey research.

DRS Data Services Limited is part of the DRS Group.

Please note DRS products and services are subject to change without prior notice and that the information provided is for guidance only. DRS equipment complies with all current regulations. All trademarks acknowledged.



DRS Data Services Limited